

Water Information System in Kyrgyzstan

Azamat Karypov

**Coordinator of Water Information
system in Kyrgyzstan**





KYRGYZSTAN

Legend

- Capital
 - National Capital (Red square)
 - Oblast Capital (Pink circle)
- Landuse
 - Cultivated and managed (Green)
- Hydrology
 - Principal river basin (Blue outline)
 - Perennial river (Blue line)
 - Non-perennial river (Dotted line)
 - Perennial lake/reservoir (Blue area)
 - Non-perennial lake/reservoir (Light blue area)
- Relief (meters a.s.l.)
 - 150 (Light green)
 - 300 (Light green)
 - 500 (Yellow)
 - 1000 (Light orange)
 - 2000 (Orange)
 - 3000 (Dark orange)
 - 4000 (Brown)
 - 7000 (Dark brown)



ALL THE AGENCIES INVOLVED: based on MoU

Memorandums of Understanding were signed with 10 state organizations listed below:

- ✓ Agency for Hydrometeorology;
- ✓ Department of Forecasting, Monitoring of Emergencies;
- ✓ Crisis Management Center;
- ✓ Department of Cadastre and Registration of Rights to Real Estate;
- ✓ State Design Institute for Land Management "Kyrgyzgiprozem";
- ✓ Kyrgyz Integrated Hydrogeological Expedition;
- ✓ Department of Development of Drinking Water Supply and Sanitation;
- ✓ Department of forestry under the State Agency for Environmental Protection and Forestry of the Kyrgyz Republic;
- ✓ Central Asian Institute of Applied Earth Research;
- ✓ The SDC Water Accounting Project.

WATER MANAGED BY 4 MAIN AGENCIES AND OTHER PARTNERS



www.water.gov.kg



<http://nwrmp.water.gov.kg>

WATER INFORMATION SYSTEM

QUANTUM GIS

ArcGIS

AutoCAD

Microsoft SQL Server

GPS TECHNOLOGY

VPN

Интернет

Региональное отделение **БУВХ**

Региональное отделение **РУВХ**

Главный офис **ДВХМ**

Другие удалённые пользователи **МГЭ**

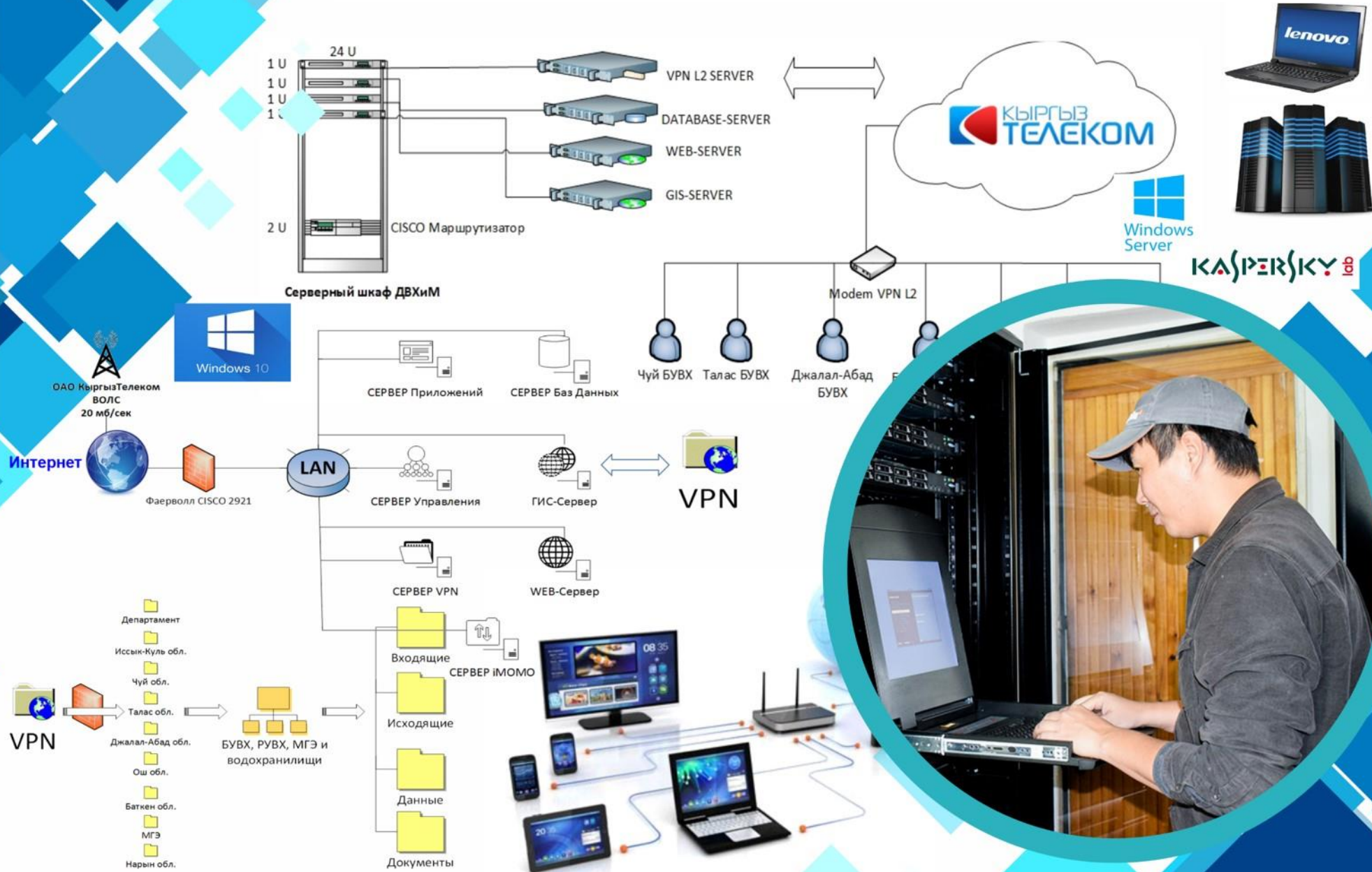
УПРАВЛЕНИЕ НАЦИОНАЛЬНЫМ ВОДНЫМ РЕСУРСАМИ-1

ПРОЕКТЫ

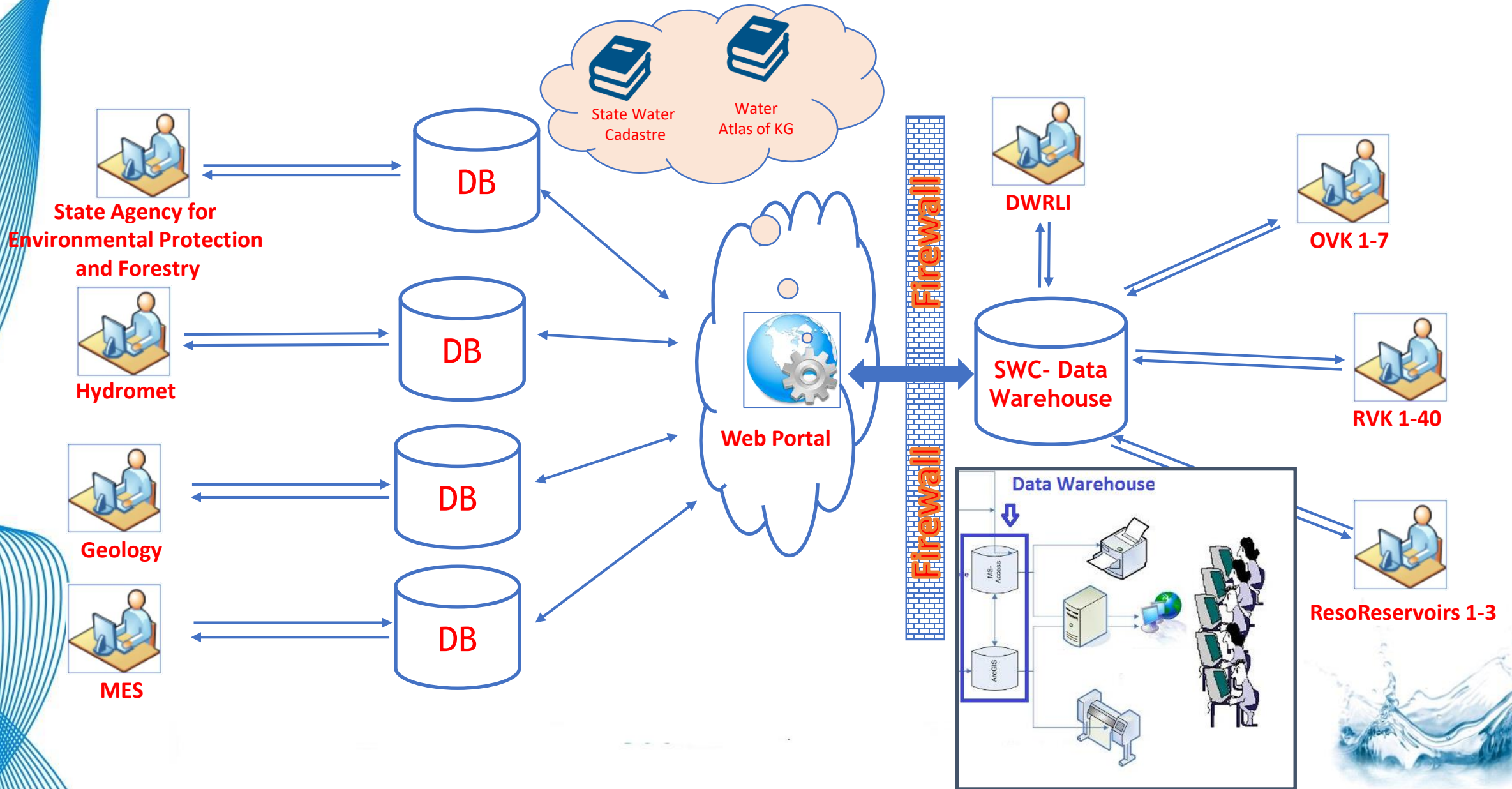
ДЕХИМ

ПАРТНЕРЫ

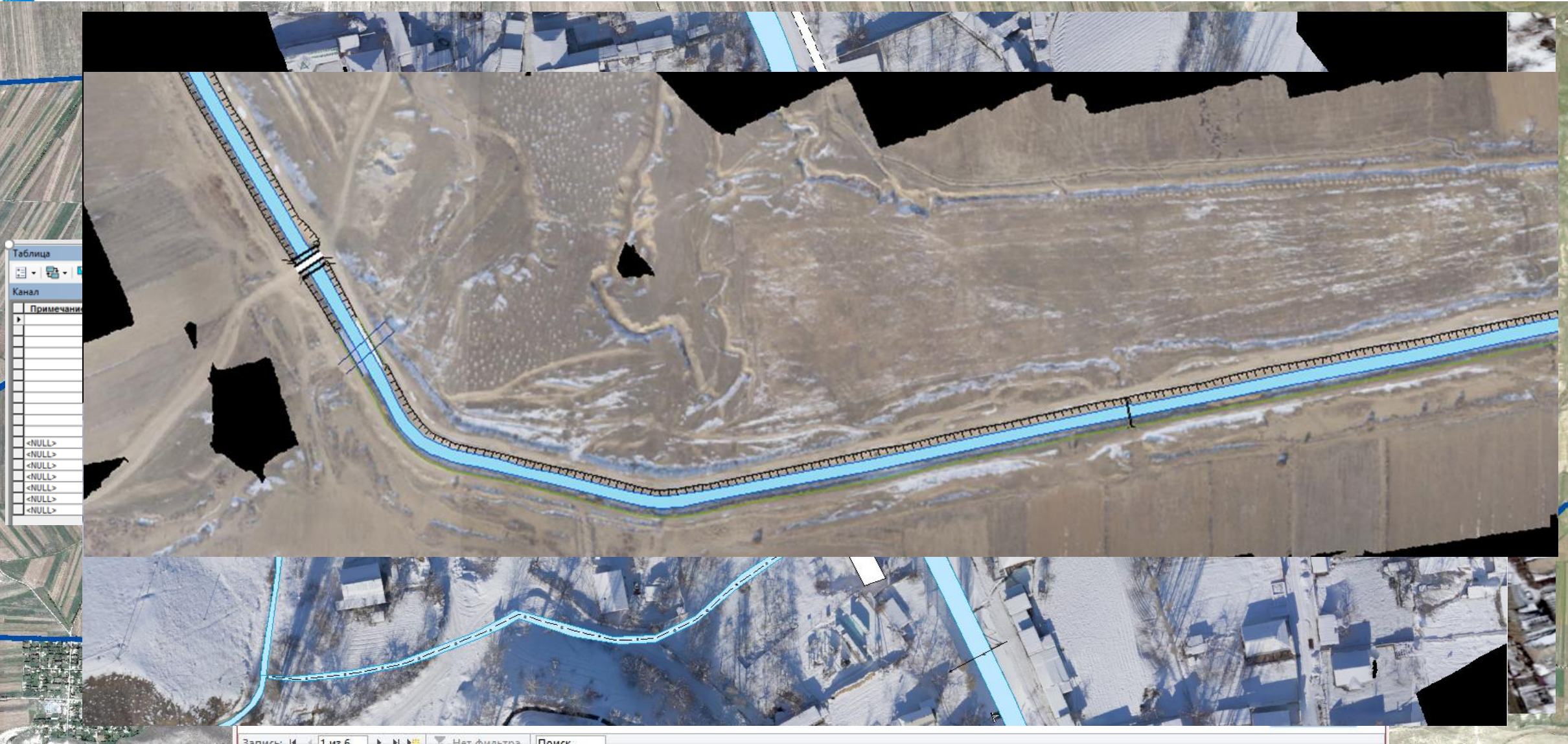
DIGITAL INFORMATION NETWORK



Structure of Water Information System (WIS)



Digital Spatial Data for Off-Farm canal "Komsomolsky"

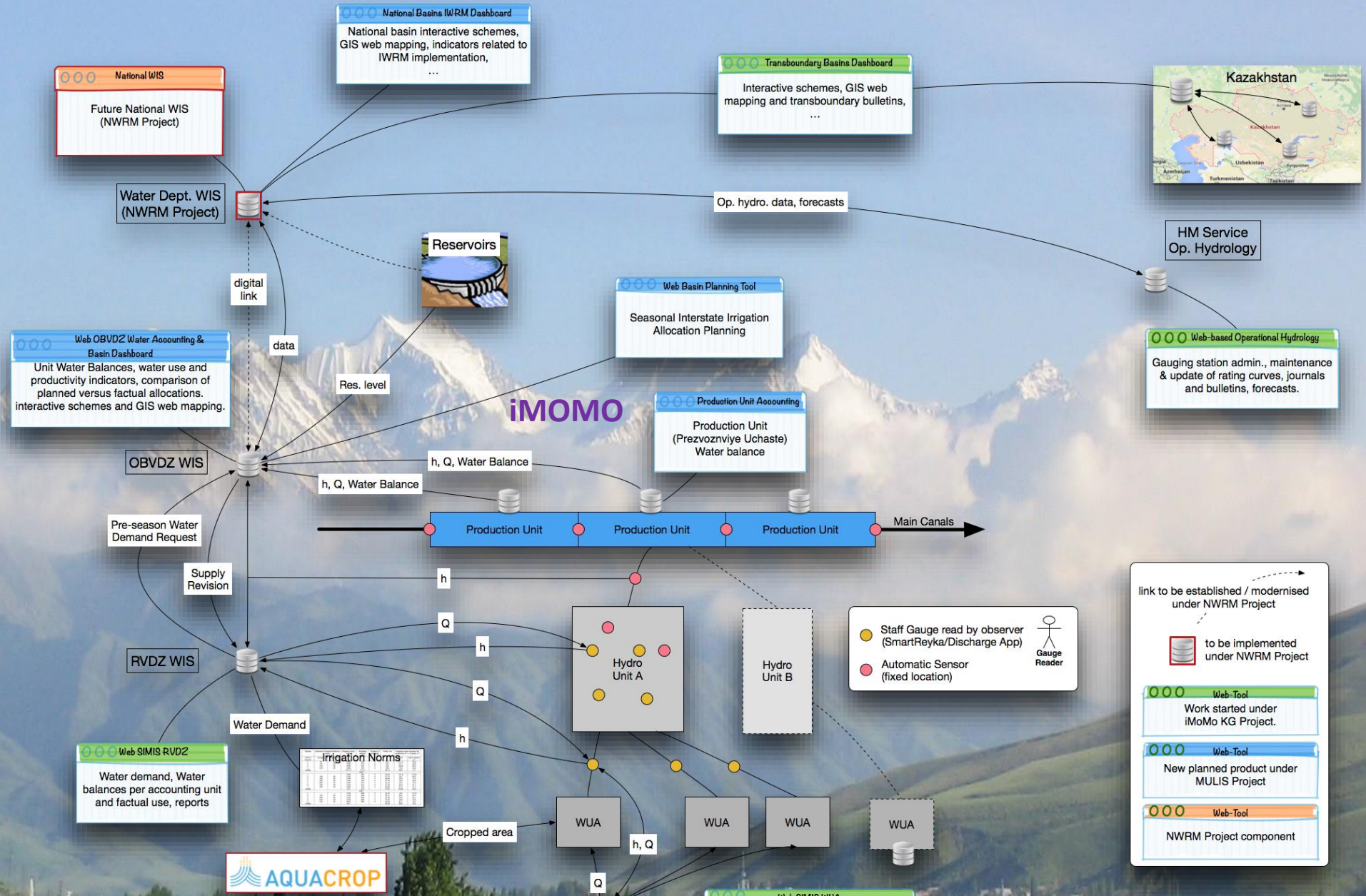
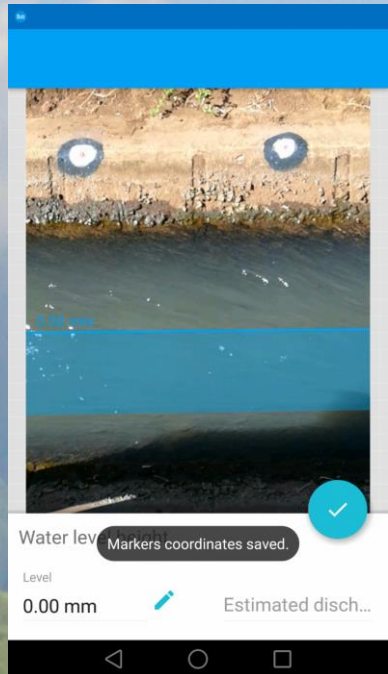


Data source: Запись: К | 1 из 6 | Нет фильтра | Поиск

64	Полилиния ZM	0	0	63111210	50+00	Мост ЖБ	<NULL>	14,280828
65	Полилиния ZM	0	0	63830100	5+21	Мост ЖБ 2 типа	<NULL>	3,642755
66	Полилиния ZM	0	0	63111210	10+75	Мост ЖБ	<NULL>	11,520327

The Digital Revolution in Irrigation has just begun

iMoMo
 Collaboration with
 SDC, FAO, World
 Bank, IFPRI, GIZ





Project "Water Accountability in Transboundary Chu-Talas River Basins"

IOWater activities and outputs

CLOSE INFO

You are here: Home

Home

Chu Local Scheme

Chu Local Schemes in KG

- Chu Local Scheme OT1 - VBCHK
- Chu Local Scheme OT2 - Shamsy
- Chu Local Scheme OT3 - Kegety
- Chu Local Scheme OT4 - Issyk-Ata
- Chu Local Scheme OT5 - YUBCHK
- Chu Local Scheme OT6 - First Alamedyn
- Chu Local Scheme OT07 - Ala-Archa
- Chu Local Scheme OT08 - ZBCHK
- Chu Local Scheme OT09 - Second Alamedyn
- Chu Local Scheme OT10 - Kant
- Chu Local Scheme OT11 - Sokuluk
- Chu Local Scheme OT12 - Ak-Suy
- Chu Local Scheme OT13 - Karabalta
- Chu Local Scheme OT14 - Chumysh

Welcome on the IOWater Web portal sharing tools and outputs in link with the project

"Water Accountability in Transboundary Chu-Talas River Basins"

Portal aiming to visualize and share the main output related to Water Data Management on the Chu Basin and Talas basin in Kyrgyzstan

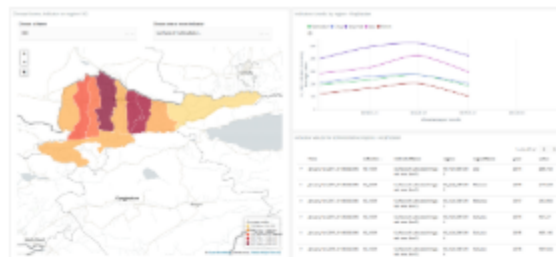
[Transboundary CHU linear scheme](#)



[Chu-Talas webmapping \(with otdelenia and monitoring points\)](#)



[Dashboard - Indicator trends per rayon](#)



[CHU Local Scheme OT1 - VBCHK](#)



[Dashboard - Indicator trends per O](#)



[CHU Local Scheme OT2 - Shamsy](#)



Connexion

Username

Password

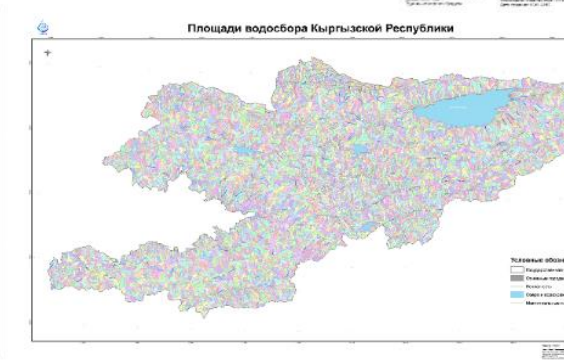
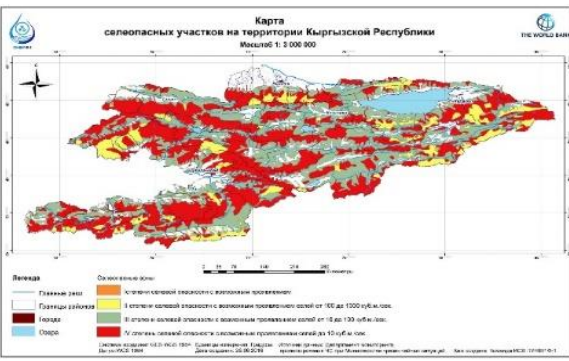
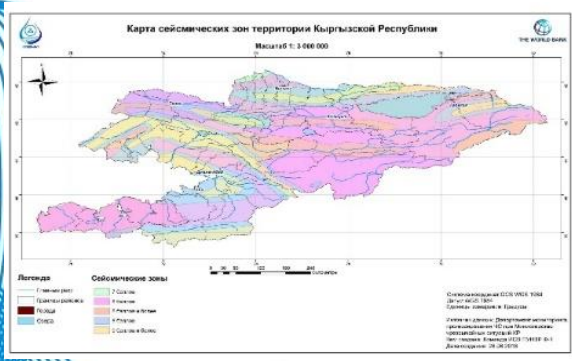
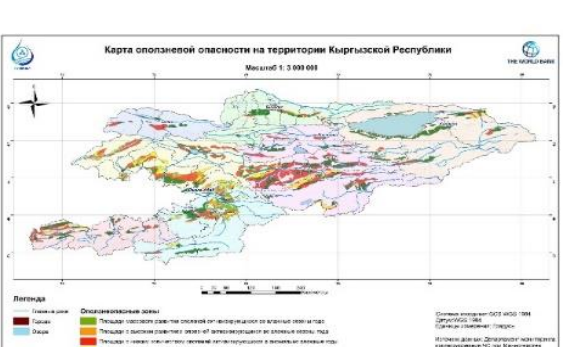
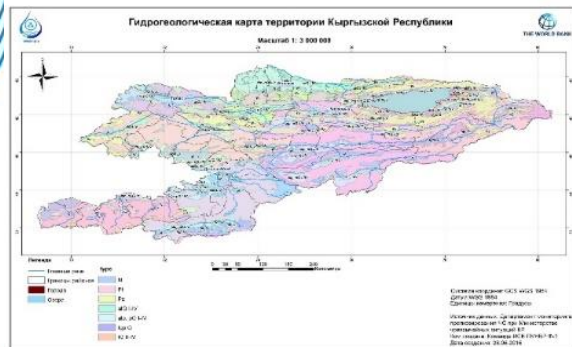
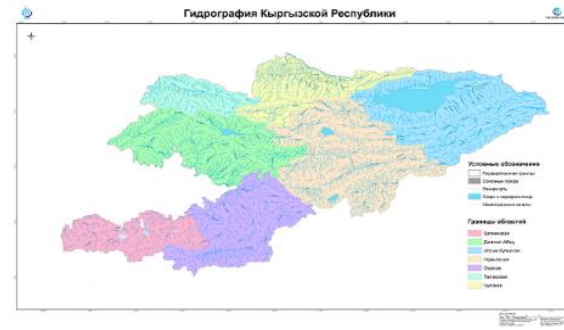
Remember Me

Log in

[Forgot your password?](#)

[Forgot your username?](#)

Examples of digital Maps



Norway project



Maps and Statistic for SDG



- Component 1 - Statistics on the maps**
- Component 2 - Quality Control**
- Component 3 - Access to Registries
Linking for Better Quality**
- Component 4 - Geoportal and maps
for sustainable development**



Session#5 “Towards nationally integrated geospatial information management”

Conclusions:

- Status of country on data ecosystem for sustainable development is need to supported because implementation of WIS has improved but there is still a major task ahead.
- Good practice is MoU in the first step to start data sharing and use existing data but important elements is legal framework on NSDI in country.
- Big obstacle is lack of cooperation and coordination between main stakeholders, user of data and experts.
- Innovative technology/platform can be based on lessons learned on different projects as Geoportal or Geo Applications.





Thank you for your attention!

